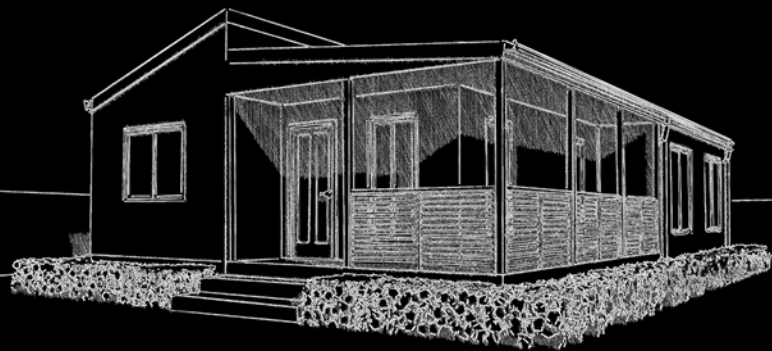
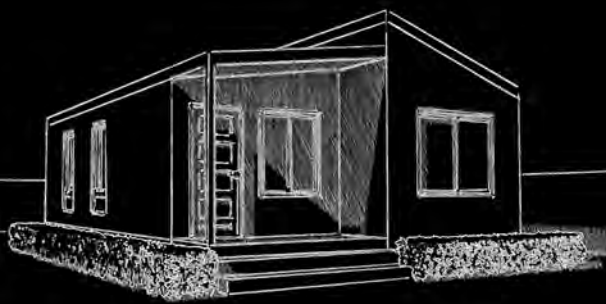
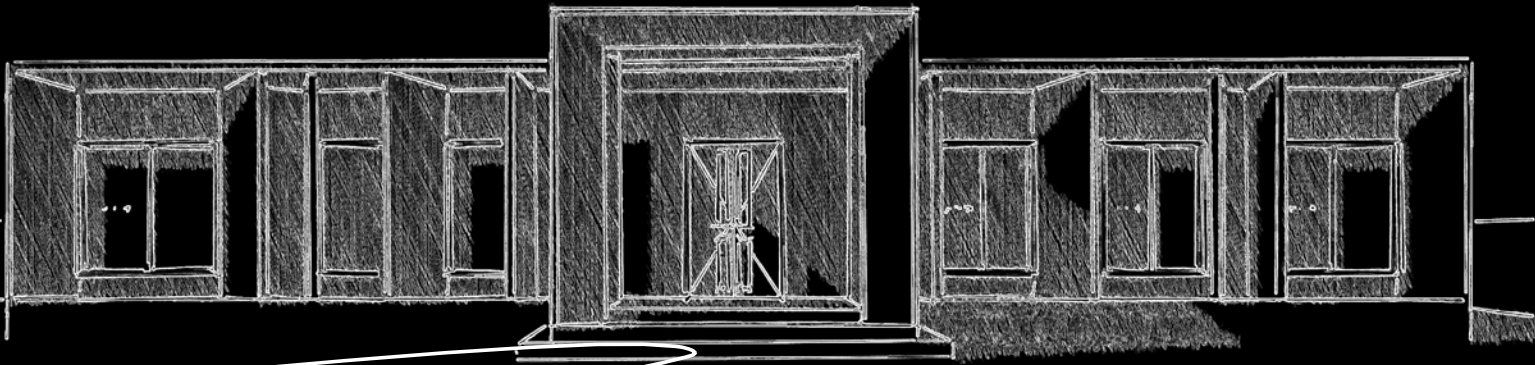




↑ Hi-TECH

MODULAR HOMES



Affordable



Built Fast



Sustainable

HI-TECH MODULAR HOMES

Business Address

1355 The Northern Road, Bringelly, 2556

Postal Address

PO Box 56, Bringelly NSW 2556

Phone

02 4774 8388

Email

sales@hitechhomes.com.au

Website

www.hitechhomes.com.au

ABN

32 603 439 827

BUILDERS LICENCE

282297C

Contract Works & Liability

01D1219570

Workers Comp Insurance

WC506329157

Home Owners Warranty

Available

FACTORIES

1355 The Northern Rd, Bringelly, NSW 2556

4090 Golden Highway, Elong Elong, NSW 2831



MEMBER
you're in good hands

HIA MEMBER No. 591826

Hi-Tech Modular Homes are proud members of the Housing Industry Association (HIA). We adhere to the building standards and guidelines, and our homes are Building Code of Australia (BCA) compliant.

DISCLAIMER

FACADE PERSPECTIVES ARE DEPICTIVE ONLY AND MAY VARY ONCE APPLIED TO ACTUAL CHOSEN DESIGN.

THESE IMAGES ARE ARTIST'S IMPRESSION AND MAY ONLY DEPICT UPGRADED VERSIONS OF OUR HOME DESIGNS.

MATERIALS SHOWN ARE DEPICTIVE ONLY AND MAY NOT REFLECT THE SELECTED FINISHES.

WELCOME

We are pleased to present our 2023 brochure.

This brochure contains new house designs that we hope will spark your interest.

Our designers have carefully selected practical and innovative designs that are on trend. We have made sure these designs fit our company's core values, which is to deliver houses that are Affordable, Built Fast and Sustainable.

Hi-Tech Modular Homes has been a pioneer of modular construction in Australia for over 30 years.

Our houses are built in our factory in modular components in as little as eight weeks. On completion, your house is installed on-site within 2 days, allowing you to move into your new home sooner.

We hope you enjoy browsing through the brochure. We are confident that there will be houses that catch your eye.

In the event that you do not find any designs that fit your needs, do not despair! Our designers will work with you to design your perfect home that suits your requirements.

Please do not hesitate to contact our sales team who will be happy to answer any questions you may have.

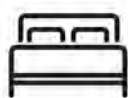
CALL US 02 4774 8388

EMAIL US sales@hitechhomes.com.au

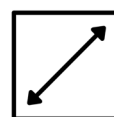
WEBSITE www.hitechhomes.com.au

PAVILLION

A beautifully designed four-bedroom home with large glass panel doors and windows to promote natural sunlight and panoramic views. This home includes a kitchen with an island bench and two decks perfect for outdoor entertaining. An optional carport may be added to the house.



4 Bedrooms



132m2 Internal Area



2 Bathrooms

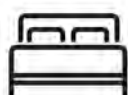
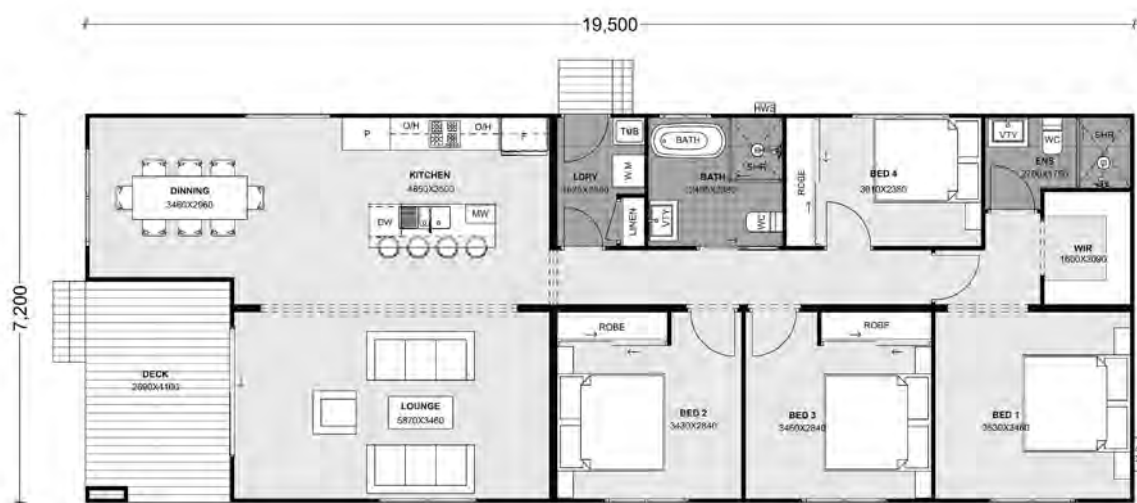


34m2 Deck
Included

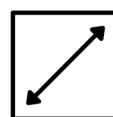
MODERN FAÇADE



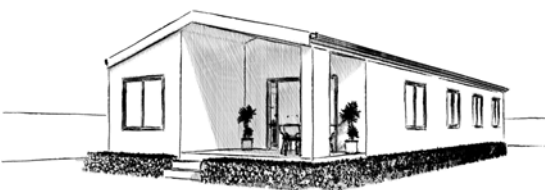
The perfect family four-bedroom home featuring a functional kitchen living/family area, built-in robes to bedrooms with walk-in-robe and ensuite in the master bedroom. This design also includes a large alfresco area.



4 Bedrooms



129m2 Internal Area



2 Bathrooms



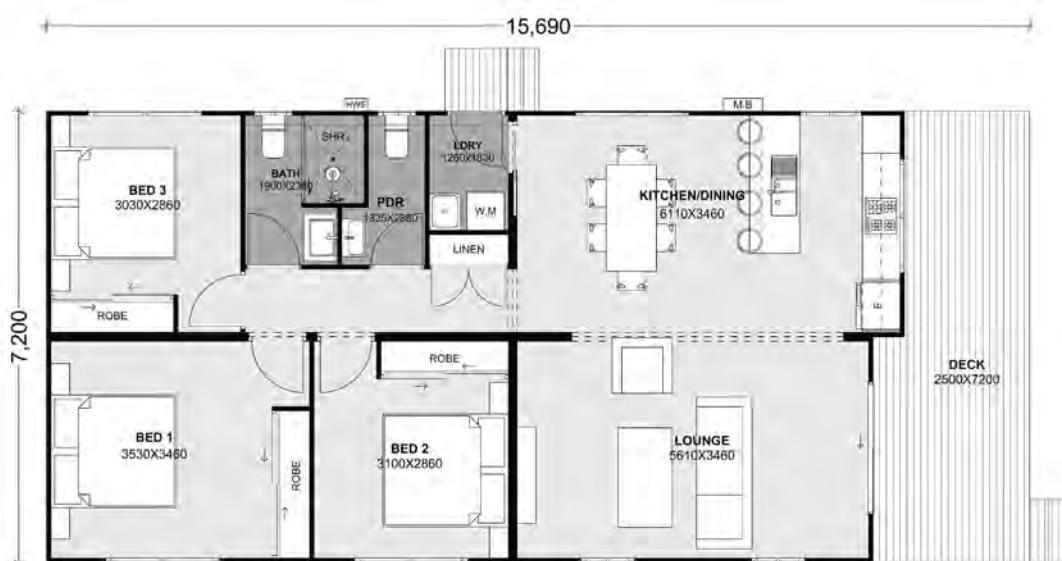
11m2 Deck
Included

MODERN FAÇADE

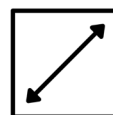


NARELLAN

The Narellan is a spacious three-bedroom home that satisfies everyday requirements of a home through its practical and compact design. As an option, add a deck for more depth to the home.



3 Bedrooms



97m2 Internal Area



2 Bathrooms



16m2 Deck
Optional

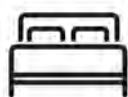
MODERN FAÇADE



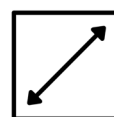
GRANNY FLATS & STUDIOS

SNOW GUM 60

This popular two-bedroom home includes built-in robes to both bedrooms, kitchen with island bench, plus a separate laundry. The design also includes a covered entry porch.



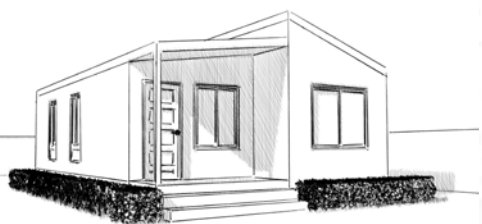
2 Bedrooms



60m2 Internal Area



1 Bathroom

4m2 Deck
Included

MODERN FAÇADE



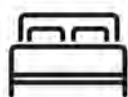
GRANNY FLATS & STUDIOS

WILLOW 60

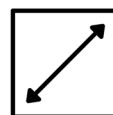
This two-bedroom home features built-in robes in both bedrooms, full kitchen with pantry, combined dining and living area, and a large bathroom including laundry facilities. A covered entry porch is a feature to this little gem. An optional carport can be added.



MODERN FAÇADE



2 Bedrooms



60m2 Internal Area



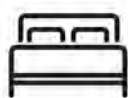
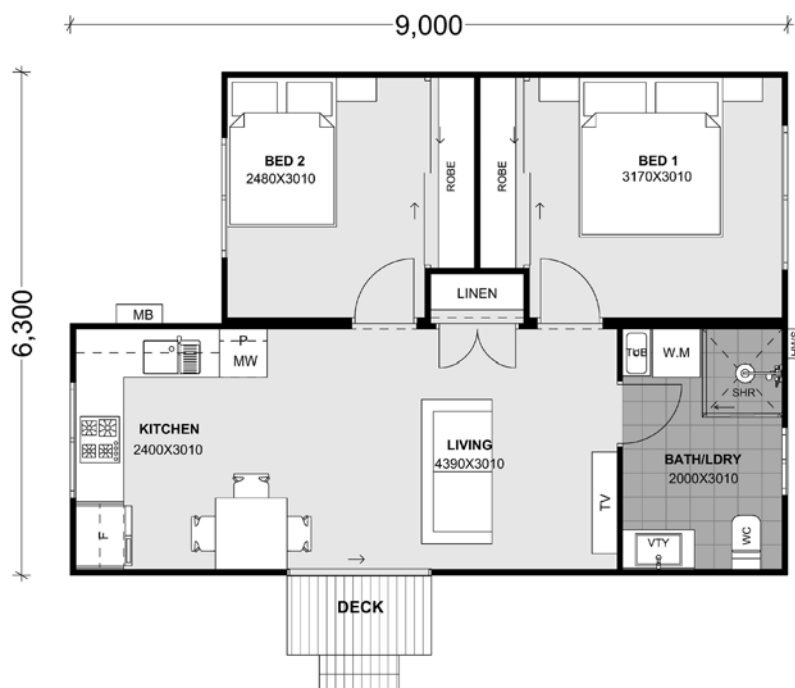
1 Bathroom

3m2 Deck
Included

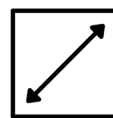
GRANNY FLATS & STUDIOS

BLACK WATTLE 50

The Black Wattle 50 is a compact two-bedroom design with the lot. It features a large kitchen, linen cupboard, and large built-in robes in the bedrooms. Optionally extend the roof to form a covered optional deck area.



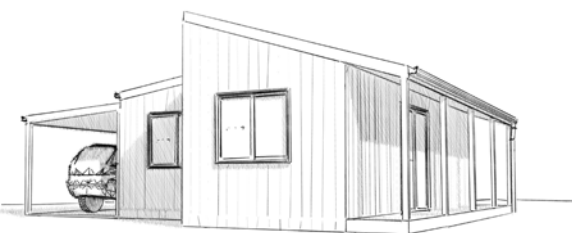
2 Bedrooms



51m2 Internal Area



1 Bathroom

3m2 Deck
Optional

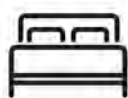
MODERN FAÇADE



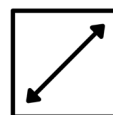
GRANNY FLATS & STUDIOS

OAKDALE 33

The Oakdale 33 is a one-bedroom flat perfect for farm stays, backyards, or tight spaces. The design features an ensuite, built-in robe, and a large kitchen and dining area. Add an optional deck to the entry.



1 Bedroom



33m2 Internal Area



1 Bathroom

10m2 Deck
Optional

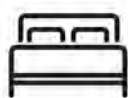
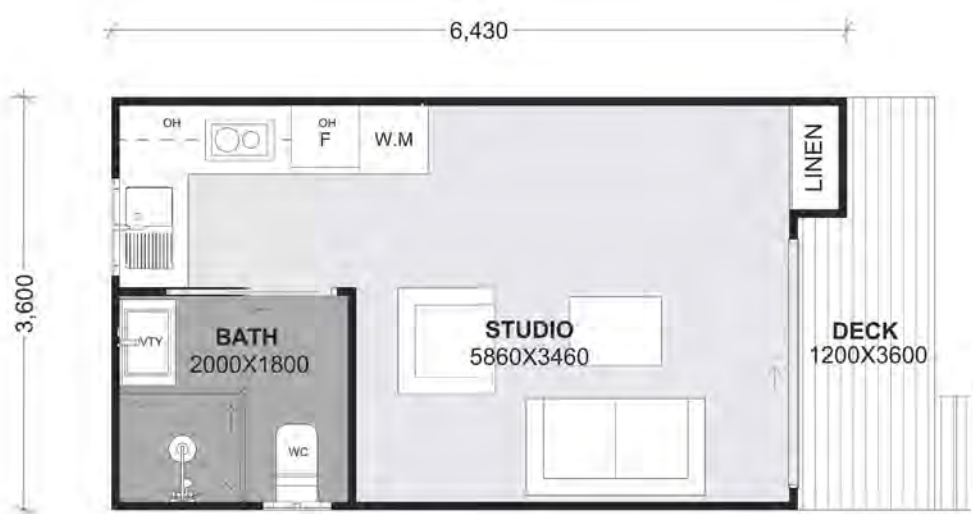
MODERN FAÇADE



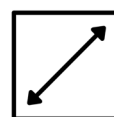
GRANNY FLATS & STUDIOS

GLEBE 22

This home is a self-contained studio, which includes a bathroom with a shower, a kitchen, and large combined living and bedroom area. Perfect for tight spaces. Optionally add a deck to the entry.



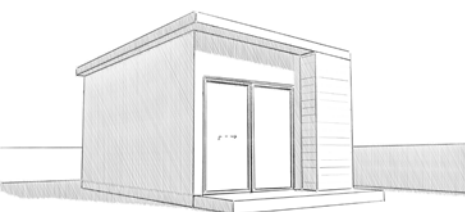
Studio



22m2 Internal Area



1 Bathroom

4m2 Deck
Included

MODERN FAÇADE

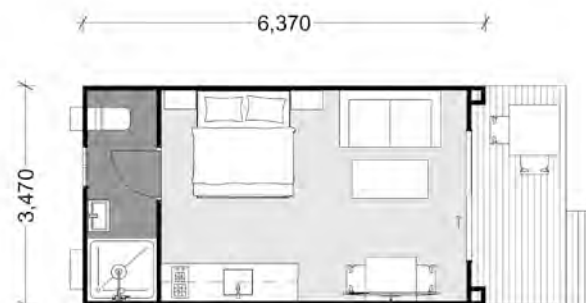


G-MOD 20

The best 20m2 studio that satisfies non-compliance builds and features all the essentials, including a bathroom with shower, a bedroom/living room area and a workbench. Perfect for tight spaces or as a cozy getaway cabin. This studio is available in two orientations, with an optional deck to the entry.



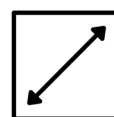
Orientation 1



Orientation 2



Studio



20m2 Internal Area



1 Bathroom



5m2 Deck
Included

MODERN FAÇADE



BUSHFIRE COMPLIANCE

A Bushfire Attack Level (BAL) is the Australian standard for measuring the risk of a home's exposure to ember attack, radiant heat, and direct flame contact. It is a scale used to determine the risk to a building catching on fire and, as the name suggests, is specifically concerned with bushfires.

A BAL is the basis for establishing the requirements for construction (under the Australian Standard AS 3959-2018 Construction of Buildings in Bushfire Prone Areas) to improve protection of building elements from bushfire attack.

A BAL is used in the assessment of constructing buildings in areas that are likely to experience bushfires. In basic terms, when a proposed building BAL rates are low on the scale, there are no related restrictions on construction. However, BAL ratings higher than 'low' will mean that you must adhere to construction requirements. There are six levels of BAL ratings:

Table: Levels of BAL Rating.

BAL Low	BAL 12.5	BAL 19	BAL 29	BAL 40*	BAL FZ*
No Significant Risk	Ember Risk	Moderate Risk	High Risk	Very High Risk	Flame Zone

Hi-Tech Modular Homes are experts in construction of houses that satisfy the safety requirement for all BAL ratings from "Low" to "Flame Zone".

****NOTE: Secondary Dwellings & Dual Occupancy Developments are not permitted in BAL 40 – BAL FZ affected areas.***

FRAMING

Hi-Tech has reliable suppliers of timber and steel framing. Both timber and steel are high performing materials for home construction. We recommend the material and size of framing based on the location of your home. This ensures your home withstands environmental conditions, including snow load, high wind, fluctuating temperatures, bushfire frequency, and precipitation rates.

Timber is a low-cost, durable, and insulating material, perfect for constructing heat efficient homes. Timber is also renewable and stores carbon, making it an eco-friendly product.

Steel is a highly durable, strong, and resistant material, suitable for homes in extreme weather conditions. This material does not warp and is non-combustible.



"H2 Treated Pine: 70-90mm"



"Truecore Steel: 70-90mm"

CALL US 02 4774 8388
EMAIL US sales@hitechhomes.com.au
WEBSITE www.hitechhomes.com.au

